



Jonathan C. Silverstein, MD, MS, FACS, FACMI

Chief Research Informatics Officer

Professor, Department of Biomedical Informatics



University of Pittsburgh

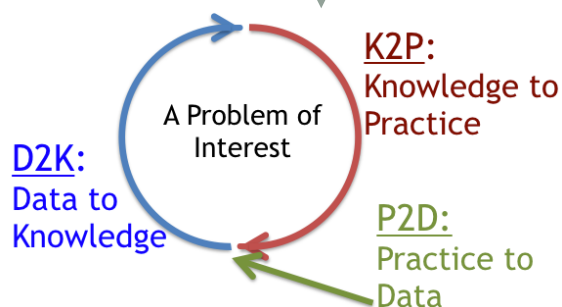
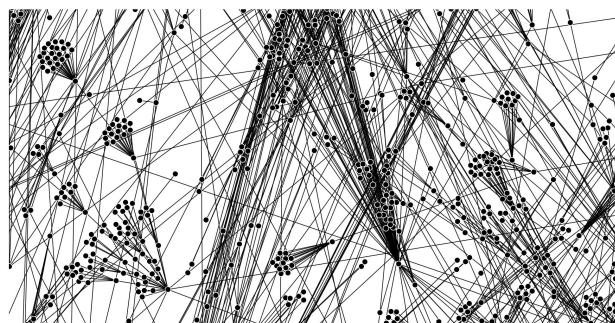
Chair, Learning Health Community



LEARNING
HEALTH
COMMUNITY



Areas of Discovery/Innovation



Core Values of the Learning Health System			
1) Person Focused	2) Privacy		
3) Inclusiveness	4) Transparency		
5) Accessibility	6) Adaptability		
7) Governance	8) Leadership		
9) Scientific Integrity	10) Value		

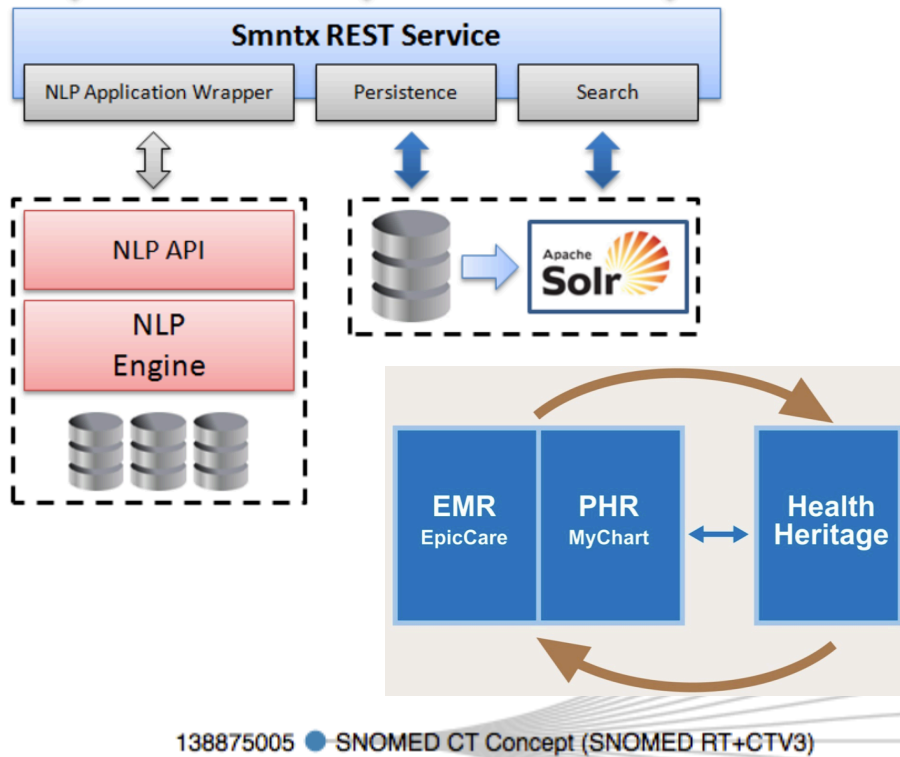
**1. Biomedical Informatics
Infrastructures (SaaS, vocab, viz)**

**2. Clinical Decision
Support (P2D and loop)**

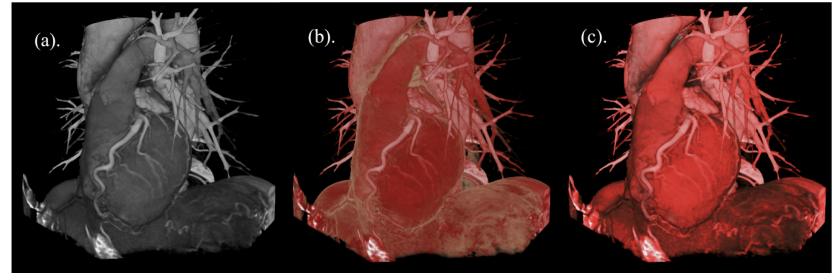
3. Collaborative networks

PEER-REVIEWED PUBLICATIONS: Curated [bibliography at NCBI/PubMed](#). Curated [citations at Google Scholar](#).

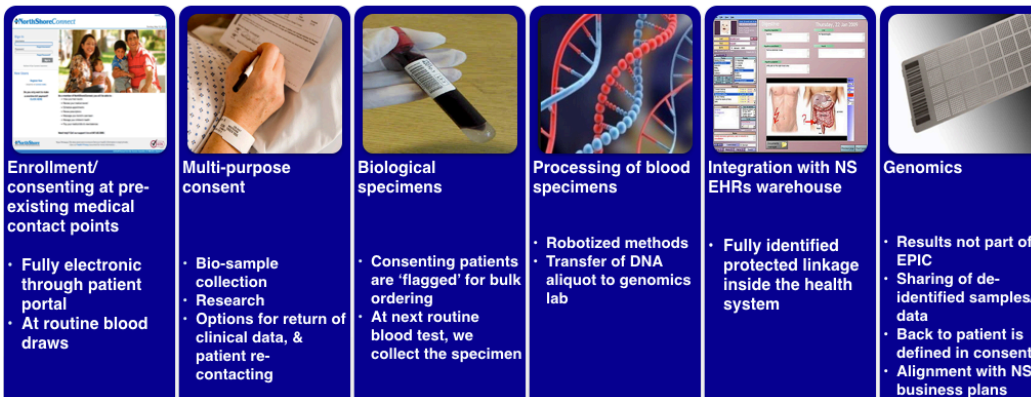
Biomedical Infrastructures (SaaS, NLP, vocabularies, interactive visualization)



Grayscale + Realistic Color = Perceptual

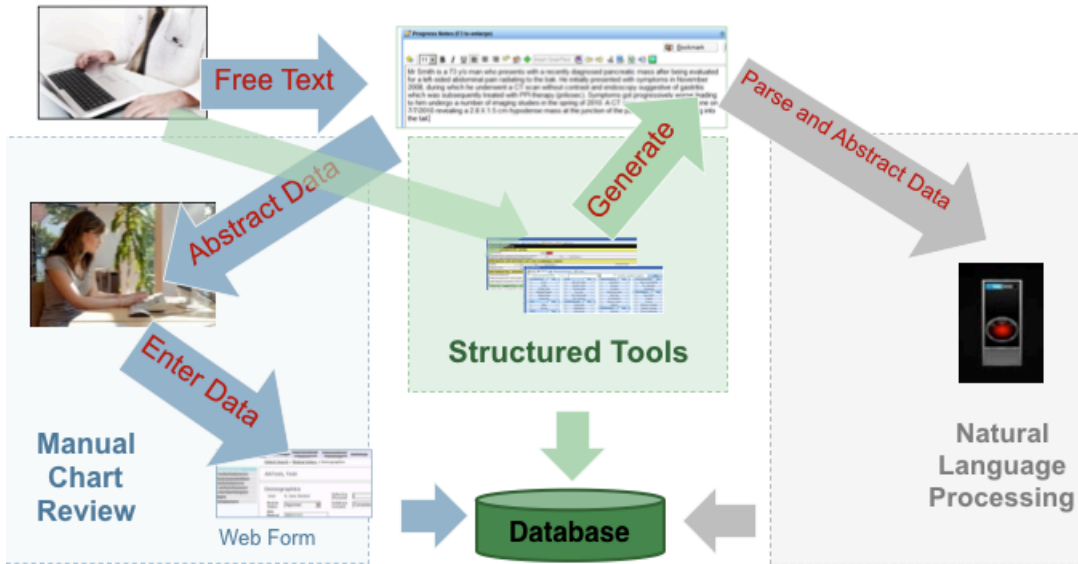


Genomic Health Initiative (efficient research)



- 123037004 ○ Body structure (body structure)
- 404684003 ○ Clinical finding (finding)
- 308916002 ○ Environment or geographical location (environment)
- 272379006 ○ Event (event)
- 363787002 ○ Observable entity (observable entity)
- 410607006 ○ Organism (organism)
- 373873005 ○ Pharmaceutical / biologic product (product)
- 78621006 ○ Physical force (physical force)
- 260787004 ○ Physical object (physical object)
- 71388002 ○ Procedure (procedure)
- 362981000 ○ Qualifier value (qualifier value)
- 419891008 ○ Record artifact (record artifact)
- 243796009 ○ Situation with explicit context (situation)
- 900000000000440960 ○ SNOMED CT Model Component (metadata)
- 48176007 ○ Social context (social concept)
- 370115009 ○ Special concept (special concept)
- 123038009 ○ Specimen (specimen)
- 254291000 ○ Staging and scales (staging scale)
- 105590001 ○ Substance (substance)

Clinical Decision Support (Structured clinical data collection and real-time use)



Colors represent the proportion of all patients seen in the Medical Group who had the syndrome of interest. Areas with insufficient data for accurate estimates are not colored.

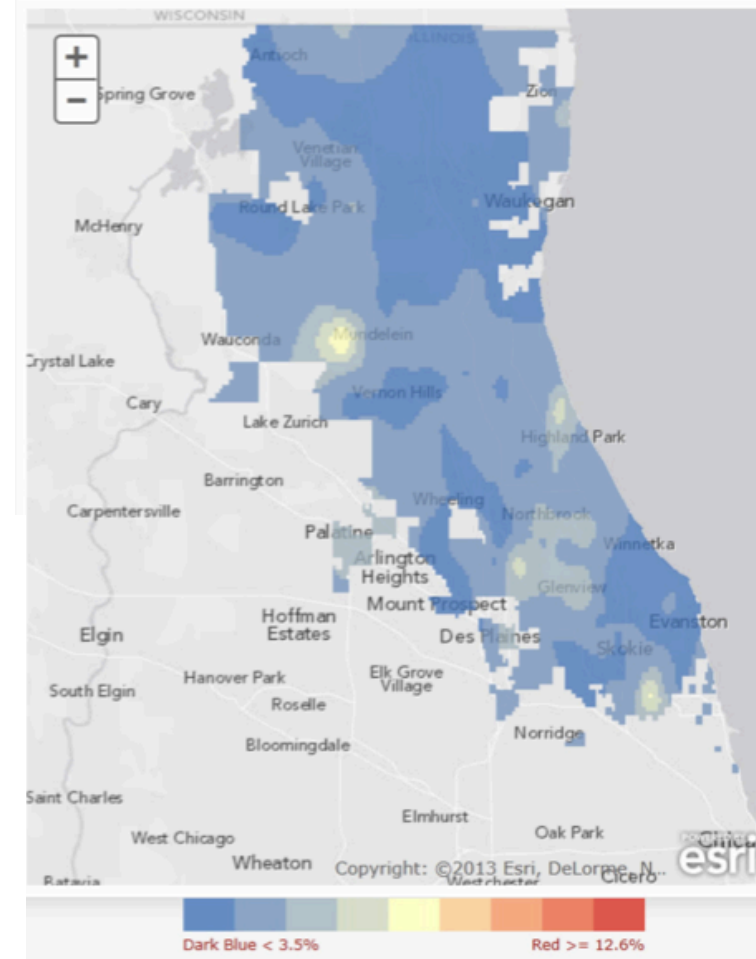
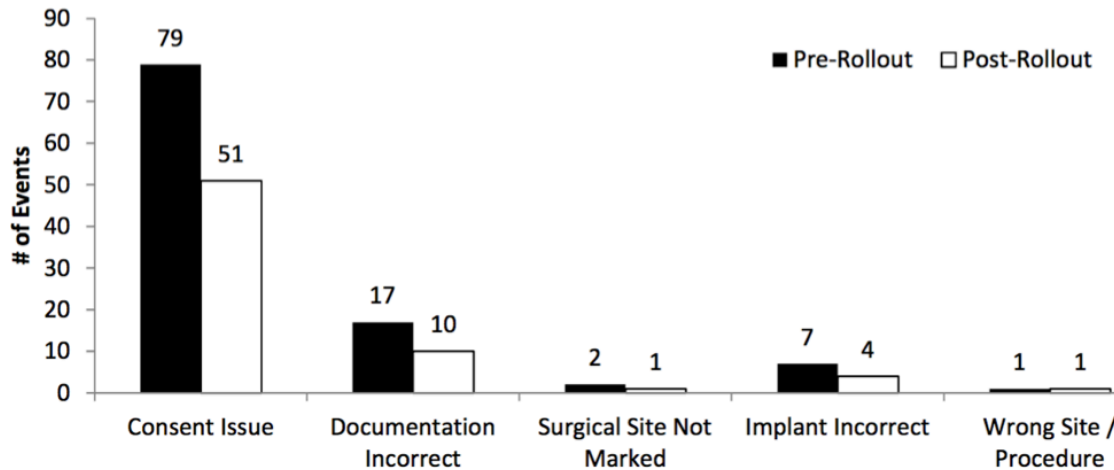


Figure 2. Perioperative Risk Events



Collaborative Networks (had a lead role in each)



Research Data Network
Epic



CHICAGO
BIOMEDICAL
CONSORTIUM



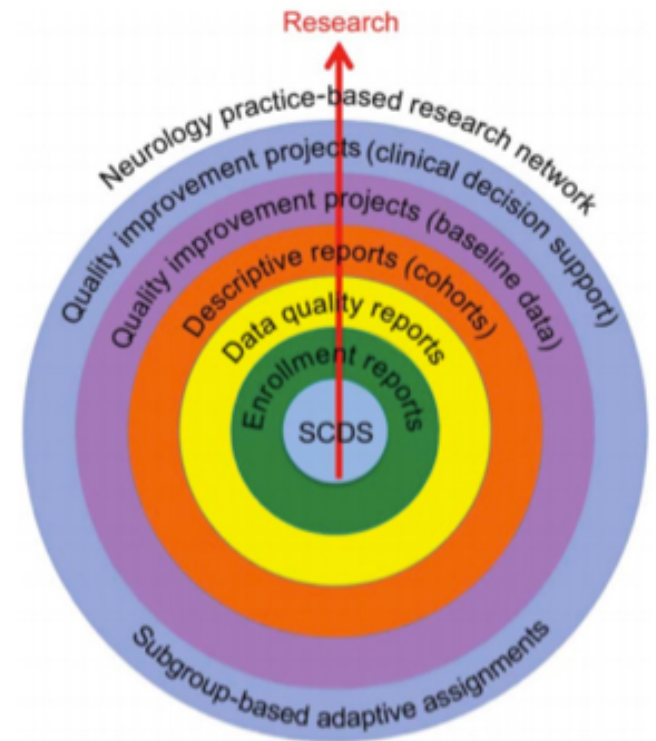
LEARNING
HEALTH
COMMUNITY



Computation Institute



THE UNIVERSITY OF
CHICAGO



Structure process outcomes



ITM Institute for
Translational
Medicine

Transforming research into better health.